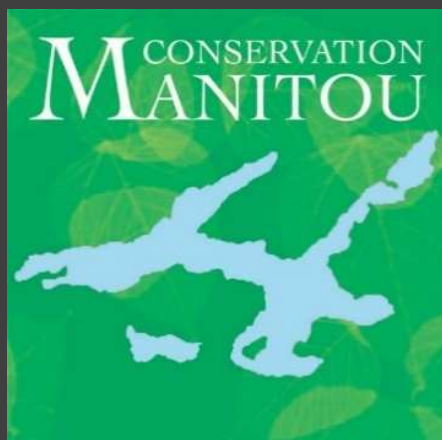


CONSERVATION MANITOU

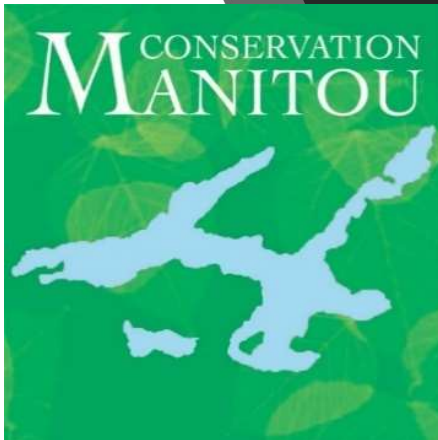
Assemblée Annuelle des Membres 2021

2021 Annual General Meeting of Members

Ivry-sur-le-Lac, Quebec

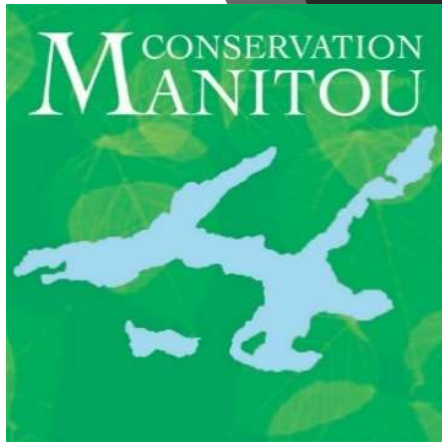


HISTORY



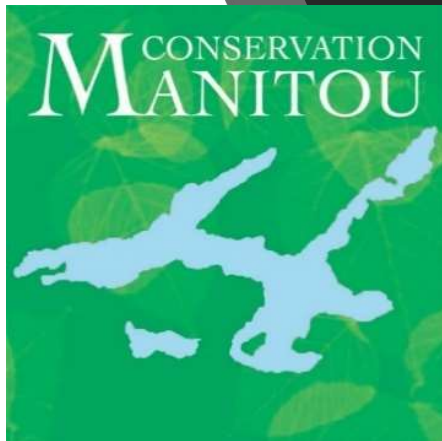
- **January 2013:** Founded as a Corporation
- **April 2013:** Registered Charitable Status from CRA
- **May 2013:** Qualified Recipient of ECCC *Ecological-Gifts Program*
- **Mission:** Preserve & protect ecosystem around Lake Manitou
- **Donations to date:** \$2.6 million in cash + \$3.6 million in land
- **Land acquired to date:** 1,391 acres valued at cost at \$5.5 million
- **Directors/Officers:** Stephen Takacsy (Chair)
David McAusland (Vice-Chair)
Kim Holden (Treasurer)
Eric St-Pierre (Secretary)
Michael Prupas
Matt Stotland
Delphine Favorel (Masters in Biology)
Scott Morgan

ACCOMPLISHMENTS 2020



- Collected **\$169,619** in cash donations
- Added **18 new Voting Members**
- Grew **Stewardship Fund** to **\$200,000** from \$170,000
- Signed offer to purchase **55 acres** for \$118,000 + tax

CONSERVATION LANDS



2013: Townsend Bay: 33 acres + 2,200 ft of shoreline on Lake Manitou + Adams Trail
Purchase: **\$1,165,000** (Willa and Stewart Campbell)

2014: Townsend Bay: 47 acres + 1,100 ft of shoreline on Lake Manitou + Adams Trail
Eco-Gift: **\$399,000** (Doreen Adams) + Purchase: **\$488,000** (BOS of \$238,000)

2015: Powell Reserve: 53 acres on Chemin Fyon and Chemin Graham
Eco-Gift: **\$133,000** (Tony Dobell)

Horseshoe Lake: 87 acres + 2,500 ft of shoreline on Horseshoe Lake
+ 1,100 ft of shoreline on Lake Manitou + section of *Laurentian Trail*
Eco-Gift: **\$1,475,000** (Shirley Stikeman and David McCall)

CONSERVATION LANDS

2016: McCall Island: 17 acres including Blueberry Island

Transferred by trustees with consent of **Nature Conservancy of Canada**

Powell Reserve: 48 acres on Chemin Fyon

Eco-Gift: **\$126,000** (David Culver)

Hanging Rock: 25 acres on Chemin des Lacs with glacial erratic

Purchase: **\$50,000** (Chalifoux)

Lac de la Loutre (*Atwater Lake*): 247 acres on Chemin Lac Azure

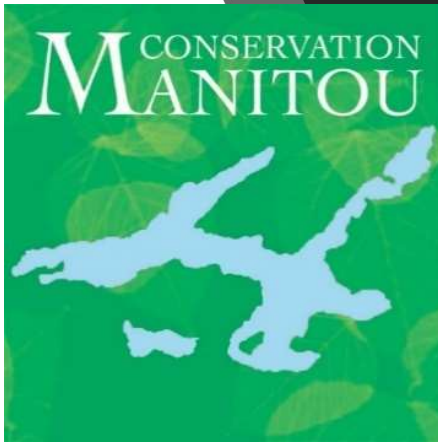
Eco-Gift: **\$670,000** (Shirley Stikeman)

Lac Brazeau: 49 acres at west end of Lake Manitou

Land Donation: **\$24,000** (Jennifer, John & Dinah Patton)

2017: Lac Brazeau: 49 acres adjacent to the above with section of *Laurentian Trail*

Purchase: **\$21,000** (Rosemary Patton)



CONSERVATION LANDS

2018: Powell Reserve: 25 acres on Geai Bleu

Eco-Gift: **\$93,000** (Estates of Mary Powell and David Culver)

Barbara Richardson: 541 acres on Chemin des Lacs featuring 3 lakes

Transferred by trustees: **\$780,000** (co-owned with NCC)

Hague: 6.2 acres donated by Ken Hague featuring a hilltop

Remer: 80 acres on Chemin Manitou with section of *Laurentian Trail*

Eco-Gift: **\$159,000** (Aaron Remer)

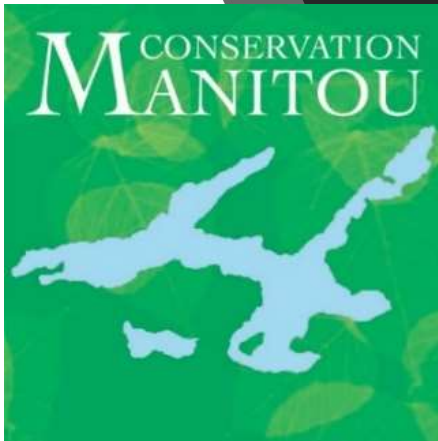
Barker Lake: 23.3 acres adjacent to Hanging Rock on Barker Road

Purchased: **\$30,000** (Elizabeth Barker)

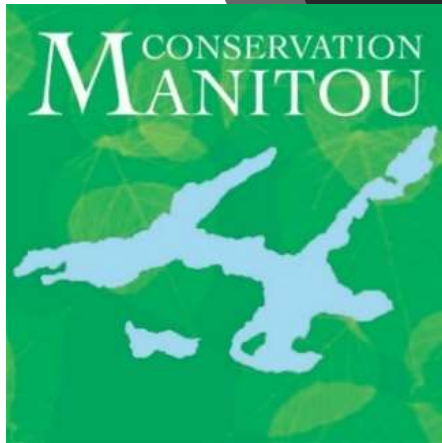
2020: Purchased **3 acres** adjacent to Hanging Rock for **\$5,000** (Stuart Barker)

2021: Purchased **55 acres** adjacent to Remer property for **\$118,000** + taxes (Huot)

3.5 acres adjacent to Hague property donated by John & Marie Tremble



CONSERVATION LANDS



TOTAL natural areas owned under protection = 1,391 ACRES

850 acres: Wholly-owned

541 acres: Co-owned 50/50 with NCC (Barbara Richardson)

511 acres in Ivry-sur-le-Lac

(4,400 ft/1.3 km on Lake Manitou + 2,500 ft/0.8 km on Horseshoe Lake)

305 acres in Ste-Agathe-des-Monts (9-acre Atwater Lake)

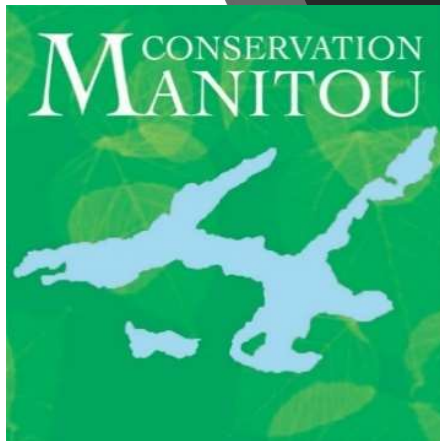
575 acres in St-Faustin-Lac-Carre (3 lakes + half of Barker Lake)

Spearheaded *Ivry Wildlife Crossing* to promote connectivity

66 acres on south side of highway 117 tunnel (P'tit Train du Nord)

Transferred option and purchased by NCC

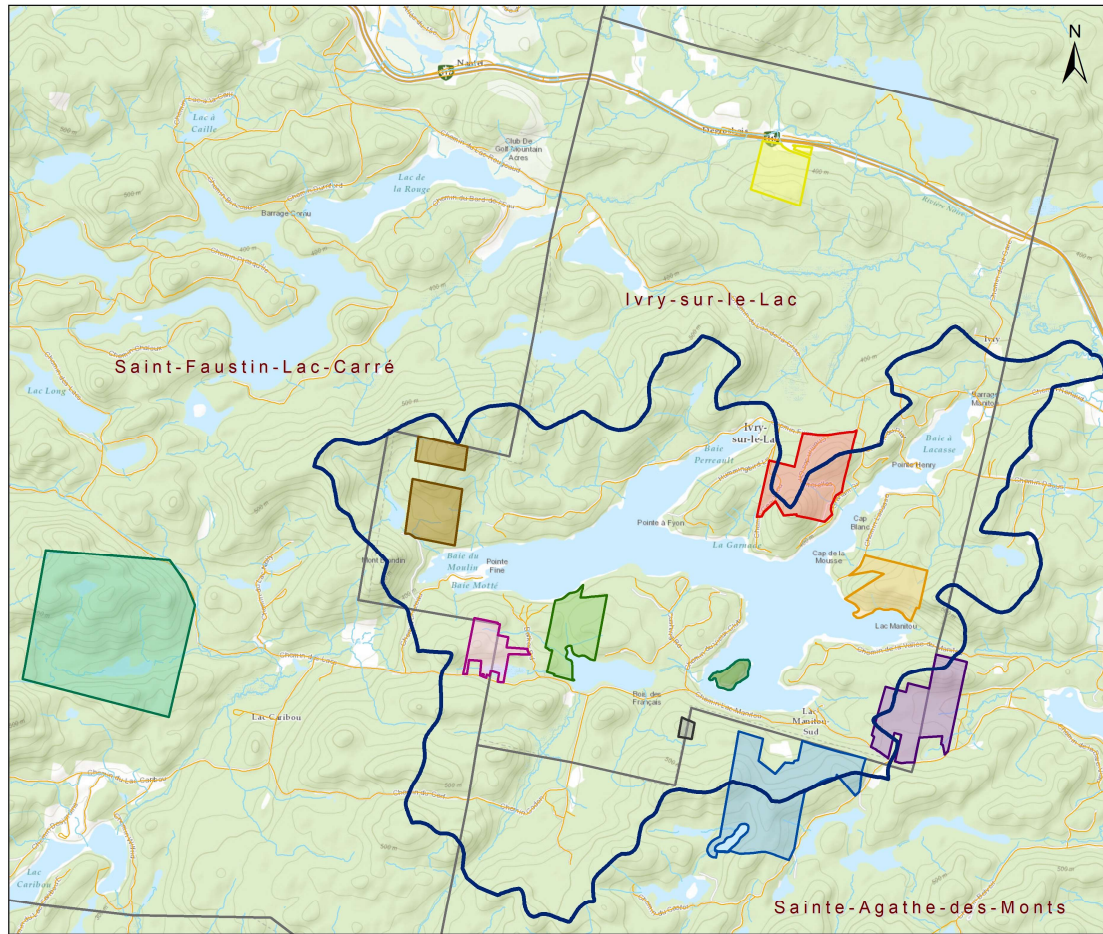
STEWARDSHIP



- 1- **Townsend Nature Preserve:** 80 acres - rezoned (Ivry)
- 2- **Powell Reserve:** 126 acres - rezoned (Ivry)
- 3- **Horseshoe Lake:** 87 acres - rezoned (Ivry)
- 4- **Hanging Rock - Barker Lake:** 54 acres (Ivry/St-Faustin) – ROW to Horseshoe
- 5- **McCall Island:** 17 acres - rezoned as wildlife sanctuary since 1989 (Ivry)
- 6- **Reserve Lac de la Loutre (Atwater Lake):** 247 acres – rezoned (Ste-Agathe)
- 7- **Hague/Tremble:** 10 acres (Ivry/Ste-Agathe)
- 8- **Lac Brazeau Reserve:** 98 acres- rezoned (Ivry) + servitudes
- 9- **Manitou Valley Reserve:** 134 acres (Ivry/Ste-Agathe) – *applying for PNR*
- 10- **Barbara Richardson:** 541 acres (St-Faustin) – Private Nature Reserve pending

Stewardship Committee:

Steve Adams, Jean-Yves Dion, Francois Gohier, Geoff Harling, Michael Prupas, Matt Stotland, Stephen Takacsy, Marc Dumoulin



Conservation Manitou Aires protégées

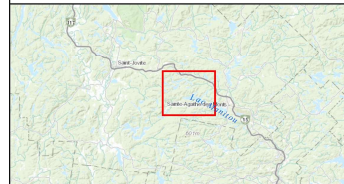
Légende

- Routes
- Cours d'eau
- Courbes de niveau
- Limite municipale
- Bassin hydrographique du lac Manitou

Propriétés conservées

- Réserve Powell (50,9 hectares / 125,7 acres)
- Réserve naturelle Townsend (32,5 hectares / 80,3 acres)
- Réserve Vallée Manitou (54,3 hectares / 134,2 acres)
- Réserve Lac de la Loure/Atwater Lake (100,4 hectares / 247,9 acres)
- Propriété Hague (2,5 hectares / 6,2 acres)
- Île McCall (6,8 hectares / 16,9 acres)
- Réserve Fer-à-Cheval (35 hectares / 86,5 acres)
- Hanging Rock - Lac Barker (20,6 hectares / 50,9 acres)
- Réserve lac Brazeau (39,6 hectares / 97,7 acres)
- Réserve faunistique Barbara Richardson (219 hectares / 541 acres) - en copropriété avec CNC
- Passage faunistique Ivry (26,6 hectares / 65,6 acres) - propriété détenue par CNC

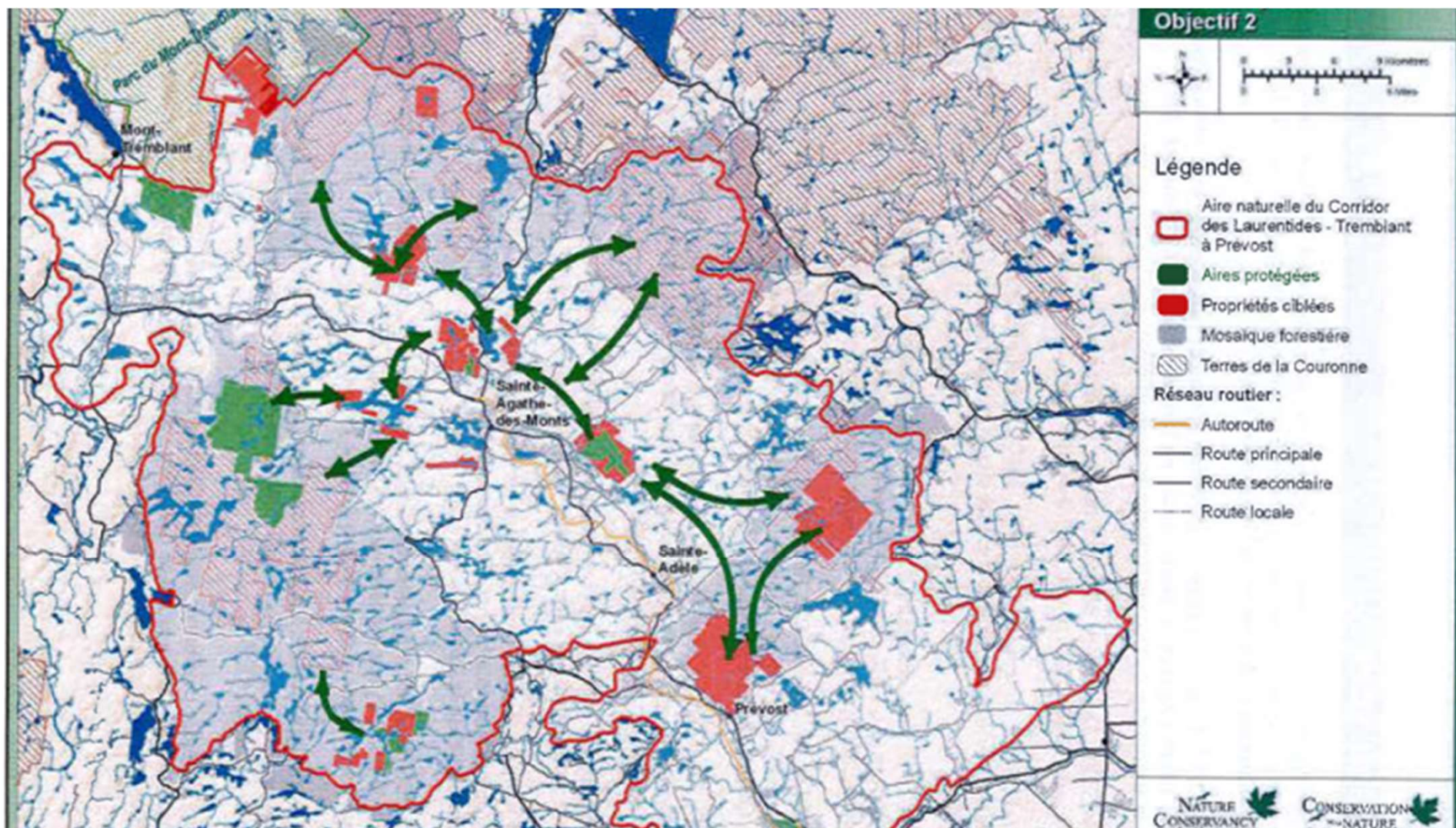
0 1 2 km

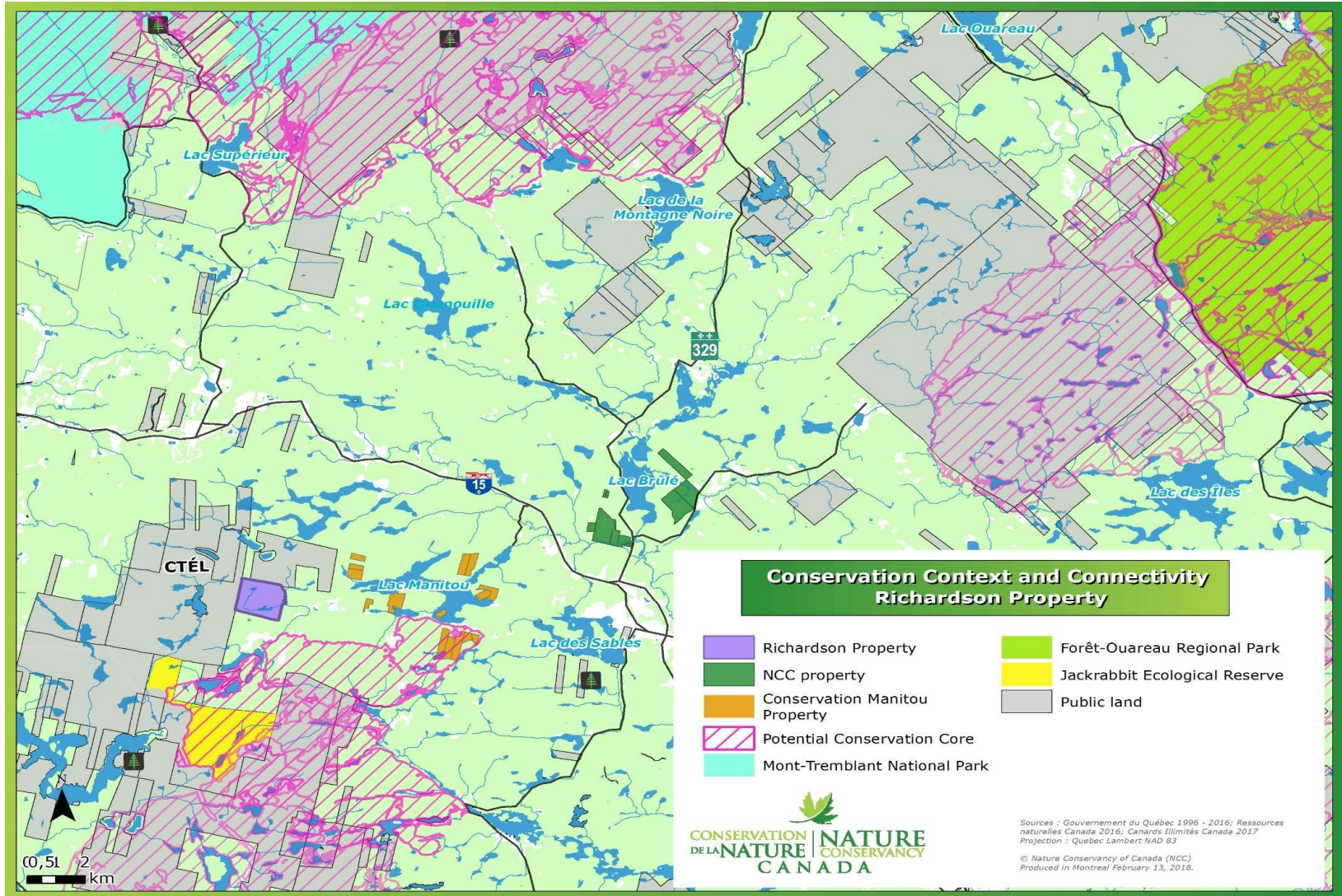


Nature-Action Québec Inc.
120, rue Leduc
Belœil (Québec) J5G 0A2
Téléphone: (455) 538-0422
geomatique@nature-action.qc.ca

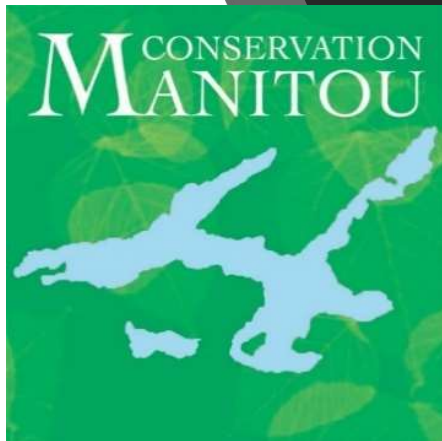
Réalisation : NAO
Préparation : GC
Date: 2021-03-09
Source de données : BD10, KNCAN, MRC, OSM
Projection : NAD 1983 UTM 18
Réf: SAG_2021_002_AiresProtégées







BARBARA RICHARDSON WILDLIFE



Barbara Richardson Wildlife Foundation (541 acres in St-Faustin)

Chemin-des-Lacs between CTEL and crown land (3 km west of Manitou)

3 lakes, wetlands, mountain peaks, valley, wildlife, future trails

Transferred by trustees 50/50 to CM and NCC (valued at \$780,000)

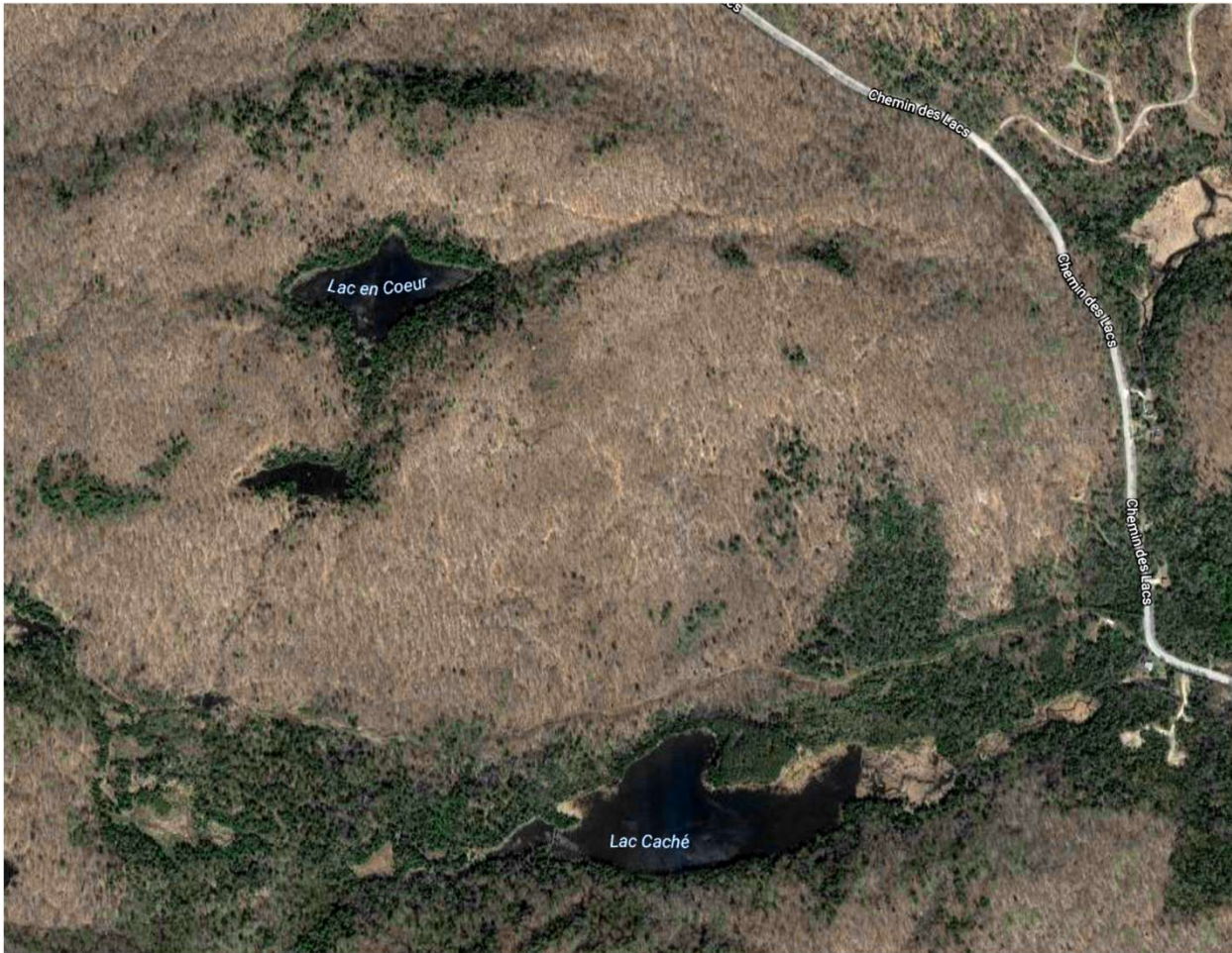
Benefits to CM:

- 1) Credibility and broadens sources of financing (grants and new donors)
\$25k from Echo Foundation + \$15k from Valdurn residents
- 2) Largest land conservancy in Canada focused in our area + partners

Benefits to NCC:

- 1) Local partner to plan acquisitions and help manage conservation lands
- 2) Create wildlife corridor/connectivity (NCC land Brule/Ste-Lucie)

RESERVE NATURELLE BARBARA RICHARDSON NATURE RESERVE
219 hectares/541 acres





RÉSERVE NATURELLE BARBARA-RICHARDSON
BARBARA RICHARDSON NATURE RESERVE

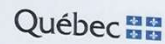
Un investissement au bénéfice de la nature

An investment for the benefit of nature

Merci à toutes les personnes et organisations ayant généreusement contribué à la protection de ce site.

Thank you to individuals and organizations who have contributed generously to the protection of this site.

Barbara Richardson
Wildlife Foundation



Environnement et
Changement climatique Canada

Environment and
Climate Change Canada



North American Wildlife Conservation Act
NAWCA

www.conservationdelanature.ca

1 877 876-5444

www.natureconservancy.ca

RESERVE NATURELLE BARBARA RICHARDSON NATURE RESERVE
Lac Caché



RESERVE NATURELLE BARBARA RICHARDSON NATURE RESERVE
Lac en Coeur




An aerial photograph showing a large, winding lake surrounded by dense, green forest. The landscape is hilly and extends into the distance under a clear sky. Two callout boxes are overlaid on the image, providing information about nature reserves.

RESERVE POWELL/POWELL RESERVE
51 hectares/126 acres

RESERVE NATURELLE
TOWNSEND
TOWNSEND NATURE PRESERVE
32.4 hectares/80 acres

ISLE McCALL/McCALL ISLAND
7 hectares/17 acres




An aerial photograph showing a large, irregularly shaped lake system surrounded by dense forest. The water is a deep blue, and the surrounding land is covered in a thick canopy of trees, some showing autumnal colors. A white oval callout with a blue border is positioned in the upper left quadrant of the image, containing text about land reserves. The overall scene is a natural, wooded landscape.

RESERVE FER-A-CHEVAL +
HANGING ROCK/BARKER LAKE
87 acres + 54 acres = 141 acres



HANGING ROCK
12 hectares/31 acres

A scenic view of Lac Barker Lake, a calm body of water surrounded by a dense forest. The trees are in the peak of autumn, displaying a mix of vibrant orange, yellow, and red leaves, with some evergreen trees still visible. The sky is overcast and grey. In the foreground, dark, silhouetted branches of trees frame the left and right sides of the image. A white oval with a thin border is centered in the upper portion of the image, containing text.

LAC BARKER LAKE
9 hectares/23 acres



LAC-DE-LA-LOUTRE/ATWATER LAKE
100 hectares/247 acres

RESERVE LAC-DE-LA-LOUTRE
ATWATER LAKE RESERVE
Recognition Plaque de Reconnaissance
Canada 150
Shirley McCall-Stikeman



RESERVE LAC BRAZEAU
LAKE BRAZEAU RESERVE
40 hectares/98 acres



TERRAIN REMER PROPERTY
32 hectares/79 acres



+ TERRAIN HUOT PROPERTY
22 hectares/55 acres

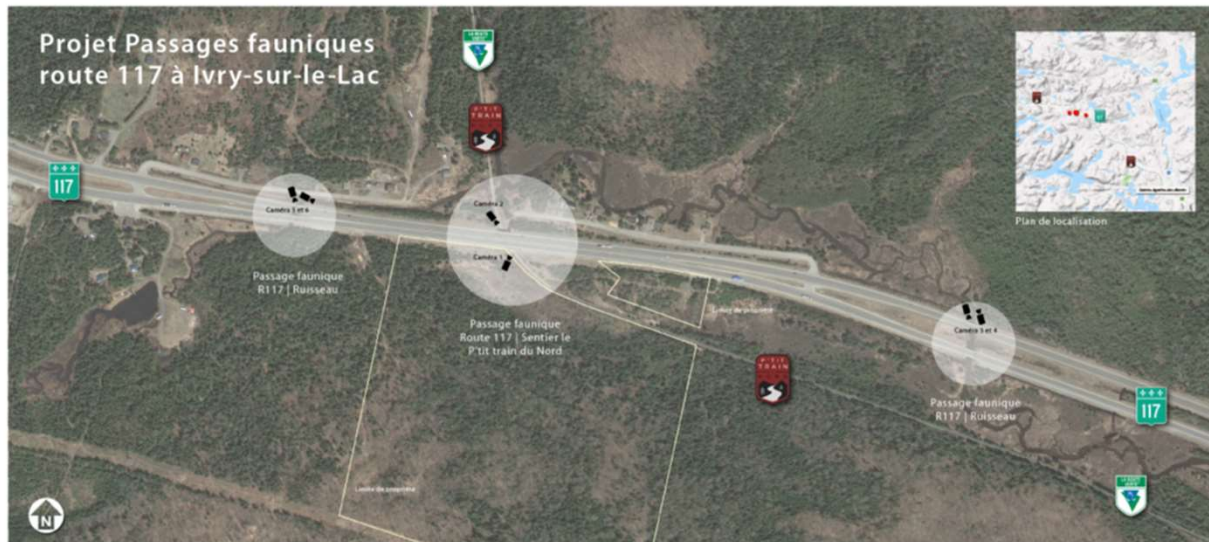


= RESERVE VALLEE MANITOU/MANITOU VALLEY RESERVE
54 hectares/134 acres



PASSAGE FAUNIQUE IVRY/IVRY WILDLIFE CROSSING

27 hectares/66 acres (NCC)



Passage faunique - R117 | Ruisseau



Passage faunique - R117 | Sentier le P'tit train du Nord



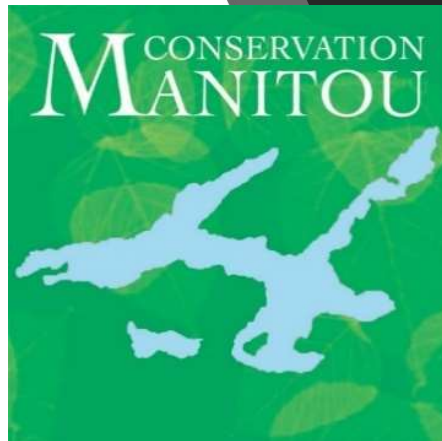
Passage faunique - R117 | Sentier le P'tit train du Nord



PASSAGE FAUNIQUE IVRY/IVRY WILDLIFE CROSSING
27 hectares/66 acres (NCC)



LONG TERM GOALS



PRESERVE eco-sensitive areas around Lake Manitou (2,000 acres)
Ownership or servitudes - Focus remains on Manitou watershed

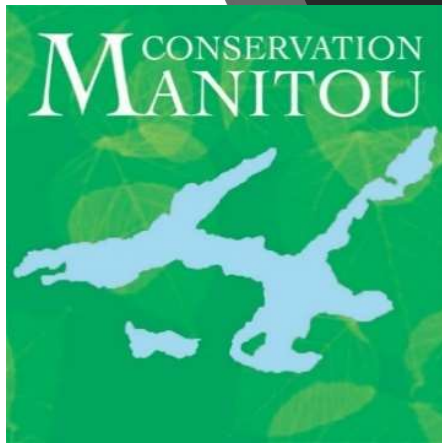
PROTECT eco-system & trails (Maple Leaf/Nantel, Laurentian, local)

PERPETUAL stewardship (rezoned, Private Nature Reserve, co-own)
Need to endow Stewardship Fund with \$300,000+

PROMOTE benefits of conservation to landowners & municipalities
(\$ Value of "*Ecological Assets*" and Return on "*Natural Capital*")
+ **Connectivity in the region** (wildlife corridors/crossings)

PARTICIPATE with others (NCC, ECL...) = More access to funding

CAPITAL CAMPAIGN



STEWARDSHIP FUND

2017 Campaign Objective: \$400,000

Purpose: repay BOS (\$150,000) + build a Stewardship Fund (\$250,000)

Stewardship Fund: Cover ongoing carrying costs of lands in perpetuity
Capital to be preserved + Income to cover annual carrying costs

Campaign Donations: \$350,000 (80% of target)

Balance of Sale: \$150,000 (fully repaid in 2017)

Stewardship Fund: \$200,000 (yielding \$11,000/year in income)

\$50,000 to go....

MERCI - THANK YOU

PRESERVONS LE FUTUR ENSEMBLE!

LET'S PRESERVE THE FUTURE TOGETHER!

